



FARM & RANCH REALTY, INC.
PO BOX 947
COLBY, KS 67701

UPCOMING AUCTIONS:

~ January 2012 ~						
Sun	Mon	Tue	Wed	Thu	Fri	Sat
1	2	3	4	5	6	7
8	9	10	11	12	13	14
15	16	17	18	19	20	21
22	23	24	25	26	27	28
29	30	31	Attend THESE AUCTIONS on January 18 th & 19 th			

1,090 AC CROPLAND & GRASS JAN. 18, 2012

FARM MACHINERY & EQUIPMENT JAN. 19, 2012



FARM MACHINERY & EQUIPMENT JAN. 19, 2012 @ 10:30 MST

TERMS: Cash or good check day of sale. No items to be removed before being settled for. Announcements made day of sale take precedence over printed material.



HYSTER CHALLENGER 50



JD 230 GRAIN HEAD



JD 9400 60' HOE DRILLS

TRACTORS & LOADER:

- **JD 9300**, 4WD, 360HP, 24 spd, bareback, 4,000 hrs, 710/70R-38 duals, autotrac ready, SN: RW9300H001413
- **JD 8100 MFWD**, autotrac ready, 16 spd, 3pt, Big 1,000 PTO, 4 scv's, QT, 18.4R-42 duals, front & rear weights, 5,390 hrs, SN: RW8100P005778
- **JD 8100 MFWD**, 16 spd, 3pt, Big 1,000 PTO, 3 scv's, QT, 18.4R-42 duals, front & rear weights, 5,131 hrs, SN: RW8100P005757
- Brown display w/RTK software
- SF1 software
- GPS model 1800 monitor & SF globe

COMBINES & HEADERS:

- **'99 JD 9610 Maximizer**, chopper, long auger, 3,006 eng hrs (zero hours on engine OH), 2,222 sep hrs, 30.5L-32 tires SN: H09610X681544
- **'98 JD 9610 Maximizer**, chopper, long auger, 3,427 eng hrs, 2,481 sep hrs, 18.4R-38 duals, 14.9-24 rears, SN: H09610X676459
- **JD 843 corn head**, SN: H00843X620769
- **JD 930R grain head** w/bat reel, SN: H00930R677468
- **JD 930R grain head** w/bat reel, SN: H00930R666909
- Pickup reel for JD 930
- **JD 230 grain head** w/sunflower pans

FORKLIFT:

- **Hyster Challenger 50**, 5500# capacity, brake master cylinder has been rebuilt, 1,776 hrs

TRUCK:

- **'91 Kenworth**, 345 Detroit, 9 spd, 24.5 tires, 1,110,000 mi, 60" flat top sleeper

PICKUP:

- **'00 Ford F350**, 6 spd, 4WD, 7.3 Powerstroke diesel, AC, 164,887 mi w/Harbor Service bed

TRAILERS:

- **'94 Diamond D 24'** stock trailer
- **'91 Merritt 42'** dbl hopper grain trailer, 66" sides, 24.5 tires
- **HM 5th wheel GN** trailer
- **'36' Donahue** trailer
- Golden Belt HTS-4 25' header trailer
- 30' shop built header trailer
- 1,000 gal nurse trailer, w/mix tank, 5HP B&S motor & pump
- Fencing wire trailer

SPRAYERS:

- **Red Ball 410 12-row hooded sprayer**, 3 pt, 300 gallon tank
- **'06 Top Air TA1200 pull type sprayer**, 90' booms, 1200 gal tank, triple nozzles, Raven controller, SN: B22530105
- **JD 550** pull type sprayer, 40' booms

LIVESTOCK EQUIPMENT:

- Panels
- Loading chute
- Bale feeder
- Feed bunks
- Mineral feeder
- Stock tank



'00 FORD F350



JD 750 30' NO-TILL DRILL



1,000 GAL NURSE TRAILER



SF 9X6 BLADE PLOW



36' DONAHUE TRAILER



KNIFE SLEDS



28) HESSTON HEAD HUNTERS



10' BOX SCRAPER



HM 5TH WHEEL GN TRAILER



2) JD SIDE MOUNT TANKS



JD 40' CHISEL

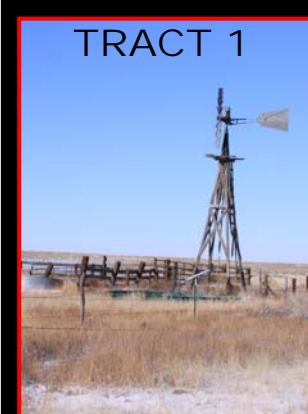
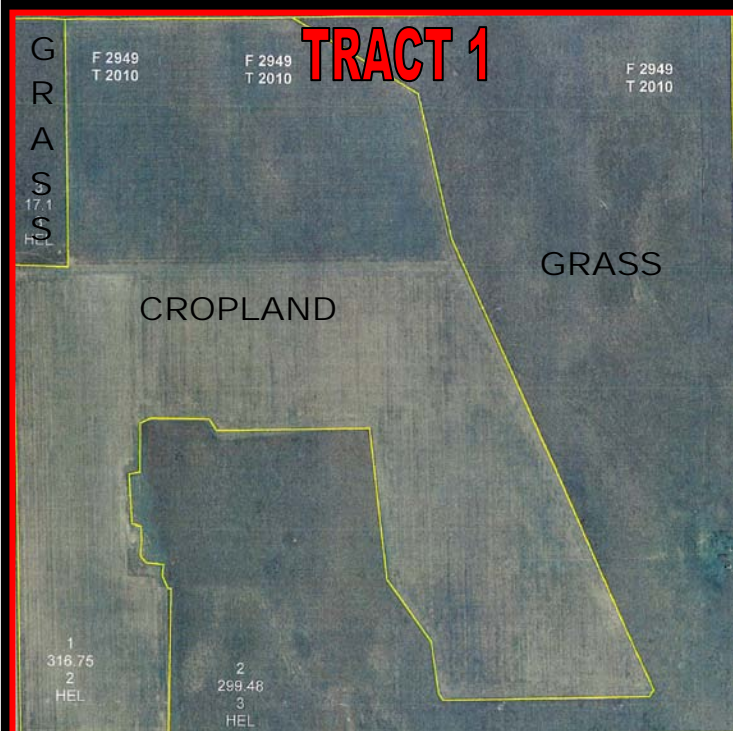


400 GAL FUEL TANKS



WIRE ROLLER

TRACTS	AUCTION ACRES	CROP LAND ACRES	GRASS LAND ACRES	WHEAT BASE/DCP YLD	CORN BASE/DCP YLD	GRAIN SORGHUM BASE/DCP YLD	2011 TAXES
1	640.0	316.8	323.2	18.5/26		36.9/42	\$416.25
2	300.0	299.2				296.1/42	\$741.71
3	150.0	*145.0		*78.6/28	*6.79/38	*62.7/44	Entire section - \$1,027.78
	1,090.0	761.0	323.2	*Cropland & base acres are estimated and will be certified by FSA after the auction.			



- ### FARM EQUIPMENT:
- **'00 JD 1770 MaxEmerge Plus Conservation 30" 24-row planter**, Seedstar variable rate drive, 1.6 bu hoppers, standard press wheels, row cleaners, coulters, insecticide boxes, dual markers, SN: H01770B680102
 - **JD 750 30' No-till drill** on 10" spacing, w/hitch, SN: N00750X026547
 - **2) 42' Fallowmasters** w/Quinstar pickers
 - **JD 9400 60' hoe drills**, 10'x12", split press wheels, transport hitch
 - **SF Model 3391-52 9x6 blade plow**, NH3 & tank hitch, new-style Quinstar pickers, SN: 3398-013
 - **4) HZ 8'x16" drills** w/split press wheel
 - **LZ 8'x12" drills** w/4" press wheels
 - **JD 14' hydro swing swather**
 - **30' tool bar** w/12-row 30" Hawkins crustbreakers
 - **JD 400** 30' rotary hoe
 - **JD 800** 20' 13-shank ripper
 - **Big Ox** 20' 7-shank ripper
 - 30' tool bars
 - **JD 40'** pull-type chisel, rigged as sand fighter (plus extra shanks)
 - 10' box scraper
- ### FARM EQUIPMENT CONT'D:
- **2) 40' NH3 knife machines**, on Caulkins frames
 - 28) Hesston header hunters
 - AC field chopper, 6' pickup head
 - Knife sleds
 - 2) Side mount tanks for JD 8100
 - 16) Schlagel closing wheels for 1770 planter
 - Hand held moisture tester
- ### SHOP EQUIPMENT & MISC:
- Pallets of parts, attachments, misc
 - Air compressor, 5HP, 60 gal, 12.7 efm @40 psi
 - Metal bolt bins w/bolts
 - Telephone poles
 - 400 NEW steel T posts
 - 2) pallets of seed corn
 - 2) Outback guidance systems
 - Assorted tires
 - Smooth & barbed wire
 - 1,500 gal water tank
 - 110 gal pickup bed fuel tank
 - 400 & 500 gal fuel tanks on stands
 - 15 1/2' slide-in stock rack for grain bed
 - 300 gal fuel tank
 - Starcraft 14' boat w/trailer, 30HP motor
 - 20 GPM fuel transfer pump