



FARM & RANCH REALTY, INC.
 PO Box 947
 Colby, Kansas 67701

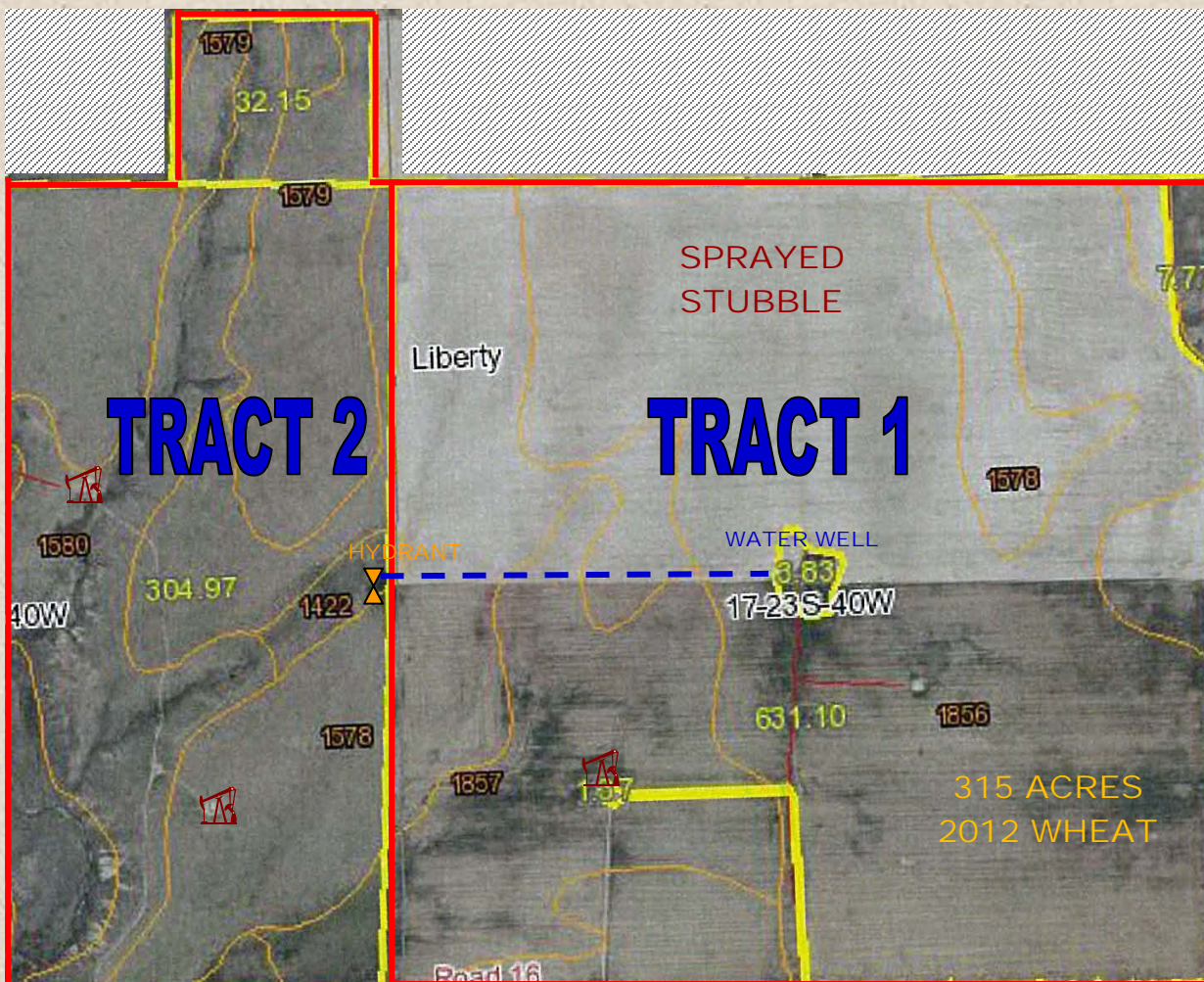
PRSRT STD
 US POSTAGE
PAID
 COLBY KS
 PERMIT NO 141

LAND AUCTION

~ February 2012 ~						
Sun	Mon	Tue	Wed	Thu	Fri	Sat
			1	2	3	4
5	6	7	8	9	10	11
12	13	14	15	16	17	18
19	20	21	22	23	24	25
26	27	28	29	See you at the Wolf Land Auction		

**1,000+/- ACRES
 CROPLAND, GRASS
 & MINERAL RIGHTS
 W/ROYALTY INCOME**

Please Post



EVIDENCE OF TITLE: Seller will provide title insurance to the Buyer(s) in the amount of the purchase price with the premium to be paid one-half by the Buyer(s) and one-half by the Seller. Title evidence will be provided on sale day.

ACCEPTANCE OF BIDS: Each successful bidder will be required to enter into a real estate purchase contract immediately following the auction. Copies of the contracts will be available from the auction company prior to the sale.

ACREAGES: Acreage figures are considered to be approximate and are from reliable sources, based on (USDA) FSA figures. All FSA information is subject to change. FSA acres may not be the same as deeded acres.

INSPECTIONS: Each potential bidder is responsible for conducting their own independent inspections & due diligence concerning pertinent facts about the property. Neither Seller or Farm & Ranch Realty, Inc., its agents or representatives, are making any warranties about the property, either expressed or implied.

EASEMENTS: This sale is subject to all rights-of-way and easements, whether recorded or not, and to oil and gas leases of record.

AGENCY: Farm & Ranch Realty, Inc., its agents and representatives, are the Exclusive Agents of the Seller.

